

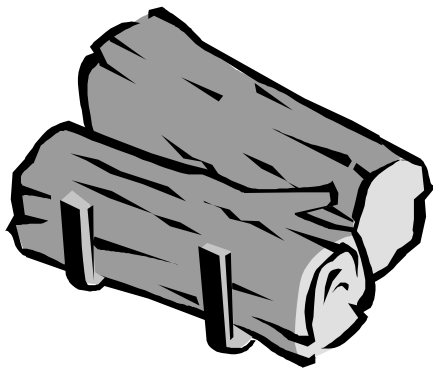
---

## FUELS FOR YOUR FIREPLACE

Dry and well-seasoned hardwoods are recommended for metal fireplaces. Soft woods tend to burn too quickly. Do not burn scrap construction lumber — it produces excessive sparks. Never use woods dipped in tar, pitch, creosote, etc., since this produces sputtering, smoking fires with toxic fumes. **Do not use wood products with synthetic binders, such as plywood or artificial logs, since such fuels produce abnormally high temperatures.**

Do not overfire your metal fireplace with excessive fuel loads. Items such as wrapping paper and Christmas trees should not be burned in any fireplace.

Charcoal and coal may not be burned in this metal fireplace.



### OUTSIDE AGENCIES (805 area code)

- Ventura County Fire Department -----389-9733
- Conejo Valley Unified School Dist. (ext. 271) -----497-9511
- Calleguas Municipal Water District -----526-9323
- California American Water District-----498-6770
- California Water Service-----497-2757
- Camrosa Water District-----482-4677
- Triunfo Sanitation District -- -----658-4605
- Ventura County Sheriff Department-----494-8256
- Ventura County Flood Control-----654-2001
- Conejo Recreation & Parks District -----495-6471
- Ventura County Environmental Health -----654-2813
- Air Pollution Control District -----645-1400
- DigAlert/USA----- 1-800-227-2600



City of Thousand Oaks  
Development Services  
2100 Thousand Oaks Blvd.  
Thousand Oaks, CA 91362

805 Area Code  
449-2323 Planning  
449-2500 Building  
449-2400 Public Works

*In compliance with the Americans with Disabilities Act, those needing special assistance to read this publication should contact the Building Division, 805/449-2500. Notification will enable the City to make reasonable arrangements to ensure accessibility to the information in this publication.*

*Printed on recycled paper.  
Updated 4/01*

---

## How to Use Your Metal Fireplace



**City of Thousand Oaks**  
**Community Development Department**

Building Division  
2100 Thousand Oaks Boulevard  
Thousand Oaks, California 91362  
(805) 449-2500

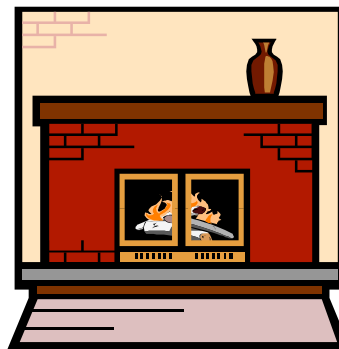
---

## OPERATING YOUR METAL FIREPLACE

- ◆ Open the fire screen by grasping handles and pushing them back to each side.
- ◆ Light a piece of crumpled paper and carefully hold it high inside the fireplace. This will warm the flue and start the chimney “drawing.”
- ◆ Light the paper in the grate and add kindling. As the kindling ignites, add more or heavier wood until the fire is well established. Be careful not to “smother” the fire.
- ◆ **WARNING: Never use gasoline, gasoline-type lantern fuel, kerosene, charcoal lighter fluid, or similar liquids to start or freshen a fire in this fireplace. Keep all such liquids well away from the fireplace while in use.**
- ◆ Close the left screen first and then the right screen, being sure they overlap. Except when adding fuel, keep the fire screens closed at all times.
- ◆ When the fire has gone completely out, close all dampers to conserve energy. Never close any dampers until you are certain there are no warm embers.
- ◆ The brick-like refractory on the floor, back, and sides of your fireplace is reinforced with steel, but can be cracked and broken. Don't drop logs or build fires directly against refractories. A careful “burn-in” of your fireplace is recommended during its initial use. For the first

few uses, build modest fires. This will cure the refractories properly. Hairline cracks may appear in the refractories, but will do no harm to its performance.

- ◆ **Ash Disposal:** Ashes should be placed in a metal container with a tight-fitting lid. Pending final disposal, the closed container of ashes should be placed on a noncombustible floor or on the ground, well away from all combustible materials. If the ashes are disposed of by burial in soil or otherwise locally dispersed, they should be retained in the closed container until all cinders have thoroughly cooled.
- ◆ Fireplaces equipped with doors should be operated only with doors fully open or doors fully closed. If doors are left partly open, gas and flame may be drawn out of the fireplace opening, creating risks of both fire and smoke.
- ◆ Keep all combustibles such as furniture, draperies, papers, and stored wood away from the front of the fireplace.



---

## MAINTAINING YOUR FIREPLACE

Ashes build up from burning logs and must be removed periodically from the fireplace. This allows air to move under and up through the flue for combustion. If ashes are allowed to accumulate until the air flow is blocked, the grate may become badly warped from excessive heat.

Ventilating fans, exhaust hoods, or central heating systems often cause fireplaces to smoke by stealing the fireplace's combustible air. If a large volume of air is captured, it can reverse the flow of air through the fireplace and cause smoke.

**Creosote formation and removal:** When wood is burned slowly, it produces tar and other organic vapors which combine with expelled moisture to form creosote. These creosote vapors then condense in the relatively cool chimney flue of a slowly burning fire. As a result, creosote residue accumulates on the flue lining. If ignited, this creosote lining makes an extremely hot fire in the flue.

Your chimney should be inspected at least twice a year during the heating season to determine if a creosote build-up has occurred. If creosote has accumulated, it should be professionally removed to reduce the risk of chimney fire.

---